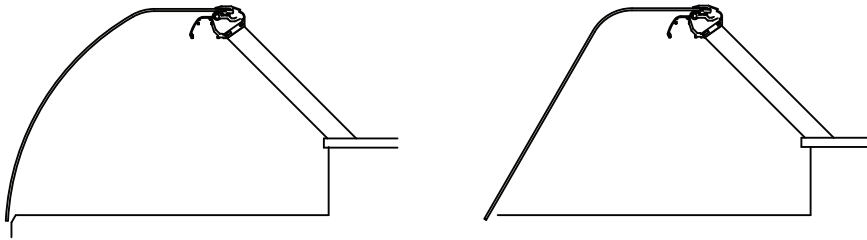


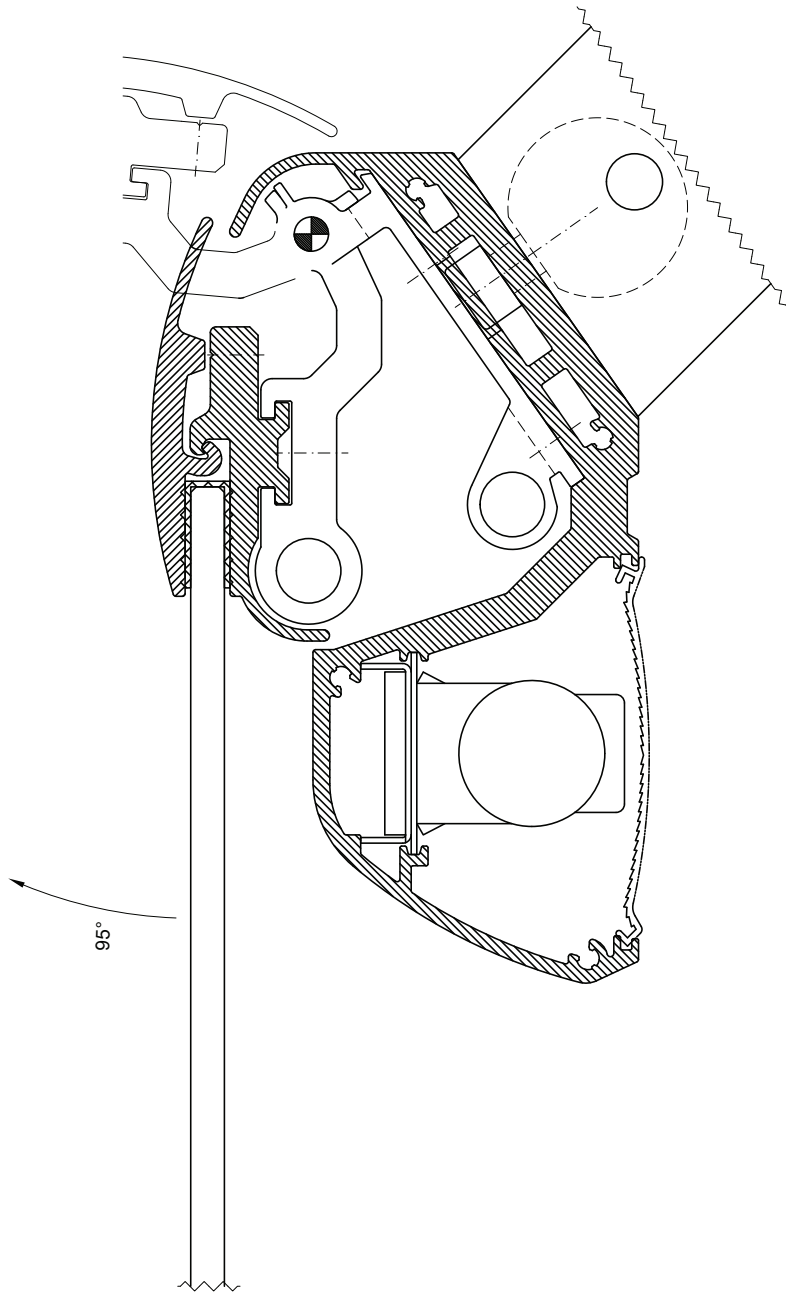
**Type 220**  
**Series 200 (Radial Lift®)**



## Product characteristics

- high stability – for large front glasses
- large distance between struts (max. 2 m)
- glass lengths independent from strut distance
- strut position independent from front glasses
- unlimited access to merchandise and excellent service comfort
- clear design - high transparency
- aluminum physiologically harmless
- surface silver satin anodized (color 011) - further colors on request
- secure due to balanced movements
- integrated light canopy

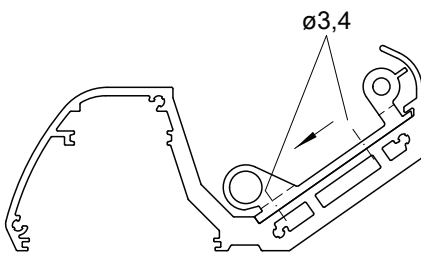
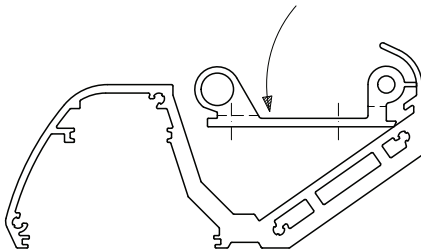
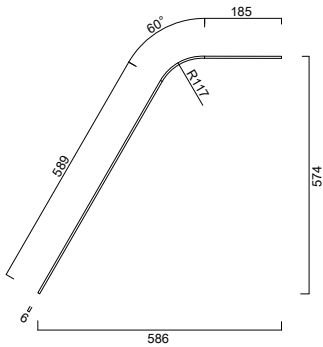




## Planning information

- front glass 6 mm tempered, height max. 700 mm, length max. 2000 mm
- top service plate 8 mm tempered, depth 175 – 200 mm
- with additional rear strut
- opening angle 95°
- front glass gas ram supported on opening and closing

glass dimensions (no warranty for glasses)

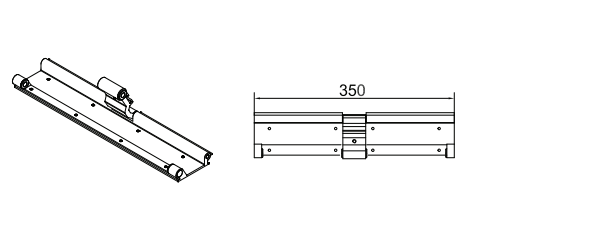
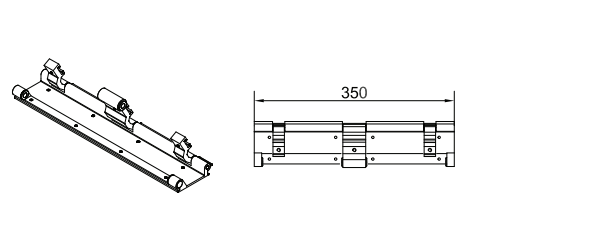

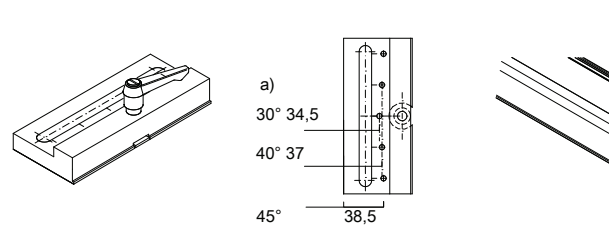


### assembly of lift-up elements

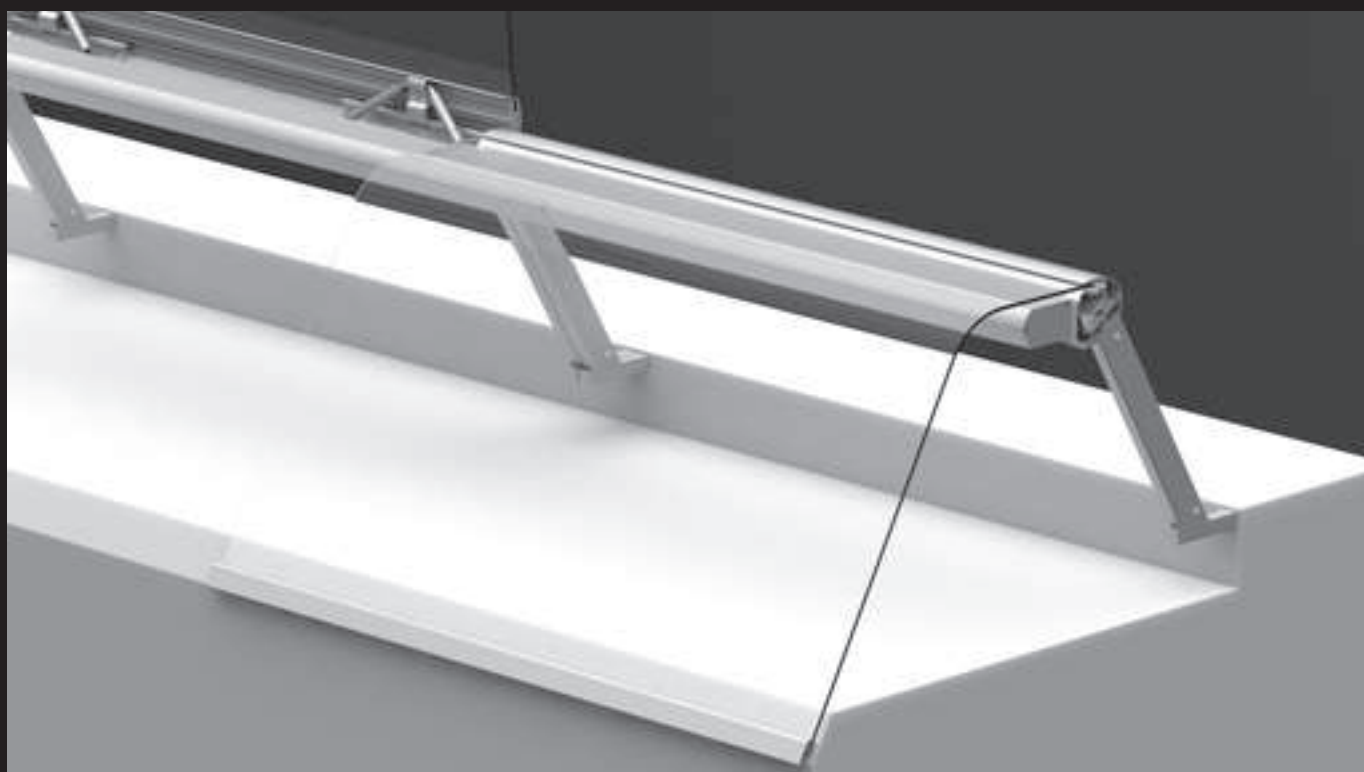
lift-up element (without gas ram) turning into base profile. Mark 8 holes with lift-up element. MakDrill 8 holes with  $\text{Ø} 3,4$  mm.

**Type 220**  
Picture

Picture	Product		Part number
	<b>Strut</b>	30° 40° 45°	<b>18.445.0054.XXX</b> <b>18.445.0056.XXX</b> <b>18.445.0057.XXX</b>
	<b>Strut</b> with guide for intermediate support without gas ram	30° 40°	<b>18.445.0074.XXX</b> <b>18.445.0076.XXX</b>
	<b>Base profile</b>	5000mm	<b>18.052.3211.XXX</b>
	<b>Connector</b> straight (for Radial Lift 220/220 A)		<b>18.445.2526.XXX</b>
	<b>Glass clamp profile</b> complete	5000mm	<b>18.445.2002.XXX</b>
	<b>Gas ram Hydro Lift</b>	100N 200N 300N 400N 500N 600N	<b>18.044.2244.040</b> <b>18.044.3235.040</b> <b>18.044.2246.040</b> <b>18.044.2247.040</b> <b>18.044.2248.040</b> <b>18.044.2249.040</b>
	<b>Assembling tool</b>		<b>18.042.0289.000</b>

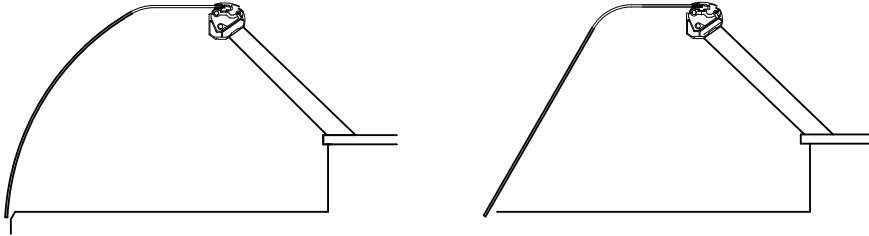
Picture	Product	Part number
	<p><b>Lift-up element</b> without gas rams</p> <p>Note: Per each lift-up element 2 gas rams!</p>	<p><b>18.445.0450.011</b></p>
	<p><b>Lift-up element for corner glasses</b> for corner glasses without gas rams</p> <p>Note: Per each lift-up element 2 gas rams!</p>	<p><b>18.445.0460.011</b></p>
	<p><b>Side-glass fixing</b></p>	<p><b>18.441.4592.XXX</b></p>
	<p><b>Drill template</b> for base profile</p> <p>18.052.3211.XXX 18.052.3225.XXX to strut a= strut slope</p>	<p><b>18.042.0278.000</b></p>

**Type 220 A**  
**Series 200 (Radial Lift®)**

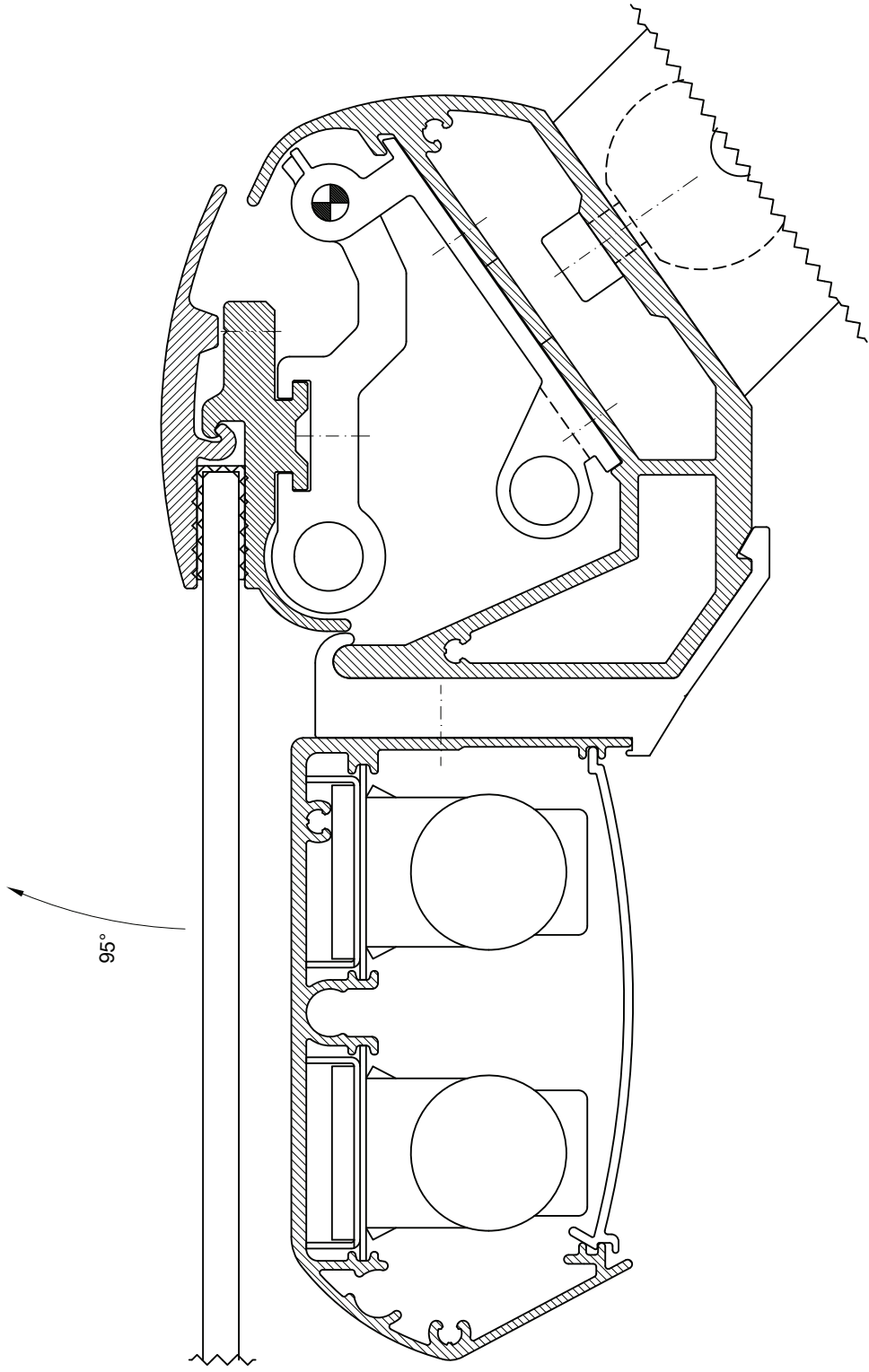


## Product characteristics

- high stability - for large front glasses
- large distance between struts (max. 2 m)
- glass lengths independent from strut distances
- strut position independent from front glasses
- unlimited access to merchandise and excellent service comfort
- clear design - high transparency
- aluminum physiologically harmless
- surface silver satin anodized (color 011) - further colors on request
- secure due to balanced movements



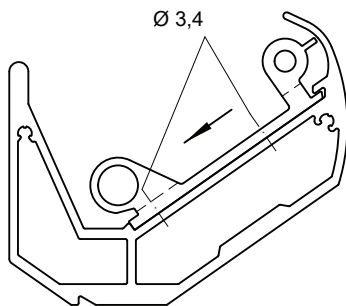
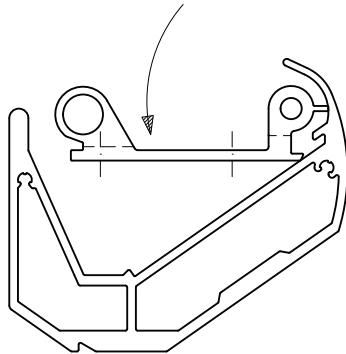
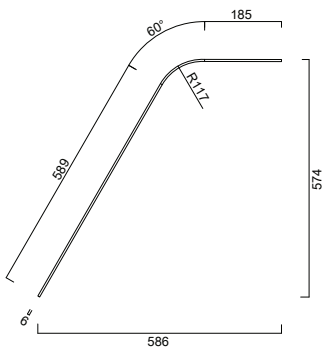




## Planning information

- front glass 6 mm tempered, height max. 700 mm, length max. 2000 mm
- top service plate 8 mm tempered, depth 175 – 200 mm
- with additional rear strut
- opening angle 95°
- front glass gas ram supported on opening and closing

glass dimensios (no warranty for glasses)

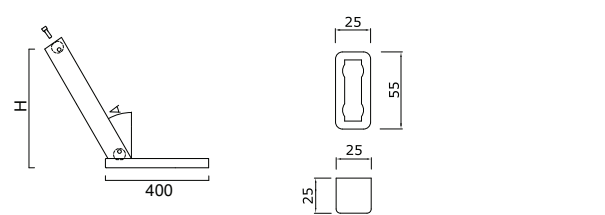
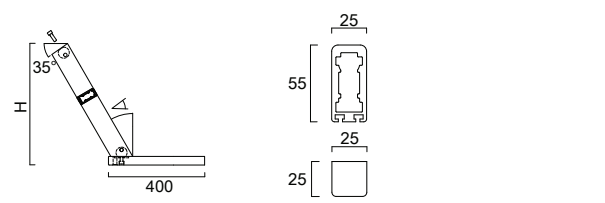

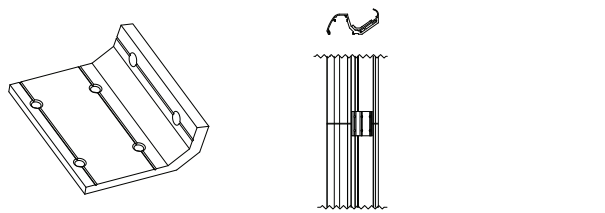


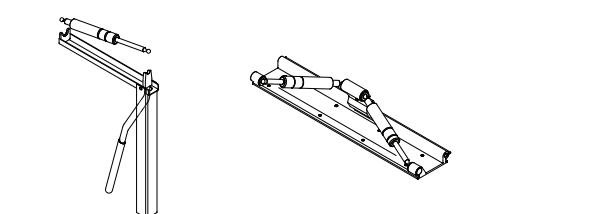


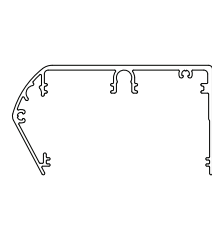
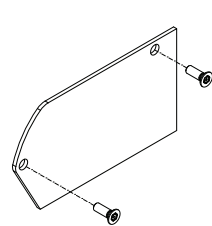
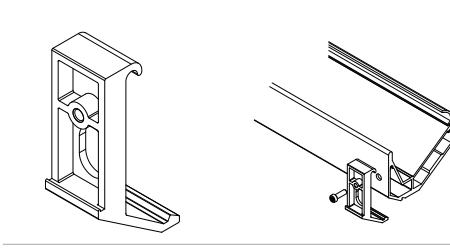
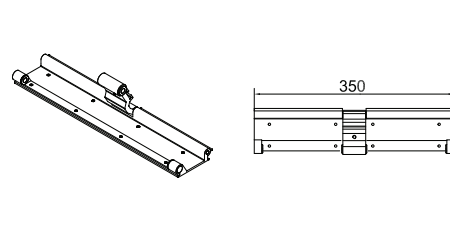
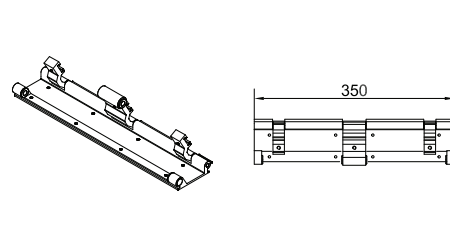
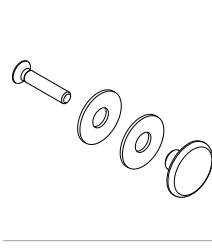
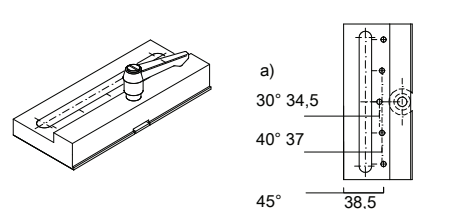
assembly of lift-up elements:

lift-up element (without gas ram) turning into base profile. Mark 8 holes with lift-up element. Drill 8 holes with  $\text{Ø } 3,4$  mm.

## Type 220 A

Picture

Picture	Product	Part number
	<b>Strut</b> 30° 40° 45°	<b>18.445.0054.XXX</b> <b>18.445.0056.XXX</b> <b>18.445.0057.XXX</b>
	<b>Strut</b> with guide for intermediate support without gas ram 30° 40°	<b>18.445.0074.XXX</b> <b>18.445.0076.XXX</b>
	<b>Base profile</b>	5000mm <b>18.052.3225.XXX</b>
	<b>Connector</b> straight (for Radial Lift 220/220 A)	<b>18.445.2526.XXX</b>
	<b>Glass clamp profile</b> complete	5000mm <b>18.445.2002.XXX</b>
	<b>Gas ram Hydro Lift</b> 100N 200N 300N 400N 500N 600N note: Assembling position to be taken into consideration! piston rod directed to outside!	<b>18.044.2244.040</b> <b>18.044.3235.040</b> <b>18.044.2246.040</b> <b>18.044.2247.040</b> <b>18.044.2248.040</b> <b>18.044.2249.040</b>
	<b>Assembling tool</b>	<b>18.042.0289.000</b>

Picture	Product	Part number
	<b>Light canopy profile</b> for T8	5000mm <b>16.052.3226.XXX</b>
	<b>End cap</b> for profile 16.052.3226.XXX	<b>18.445.1518.XXX</b>
	<b>Clamp</b>	<b>18.045.1226.084</b>
	<b>Lift-up element</b> without gas rams	<b>18.445.0450.011</b>  Note: Per each lift-up element 2 gas rams!
	<b>Lift-up element for corner glasses</b> for corner glasses without gas rams	<b>18.445.0460.011</b>  Note: Per each lift-up element 2 gas rams!
	<b>Side-glass fixing</b>	<b>18.441.4592.XXX</b>
	<b>Drill template</b> for base profile 18.052.3211.XXX 18.052.3225.XXX to strut a= strut slope	<b>18.042.0278.000</b>